

**Keldysh Institute of Applied Mathematics  
Russian Academy of Sciences**



# **Parallel algorithms for calculating problems of supersonic cold gas-dynamic spraying nanoparticles on substrates**

**V.O. Podryga\*, S.V. Polyakov, N.I. Tarasov, V.A. Usachev**

\*e-mail: [pvictoria@list.ru](mailto:pvictoria@list.ru), web page: <http://keldysh.ru/index.en.shtml>

*The work was supported by Russian Science Foundation  
(Project № 21-71-20054)*

**X-th International Conference “Russian Supercomputing Days”  
23 – 24 September 2024, Moscow, Russian Federation**

# Goals and tasks

**Main goal** is a development of supercomputer technology for modeling the complex processes in technical micro- and nanosystems

**Specific goal** is a application of the technology to solution of particular problem

**The technology includes the following components:**

- multiscale mathematical models set;
- parallel numerical algorithms base;
- parallel software tools;
- applications in nanotechnologies.

**Achieved results:**

1. A multilevel multiscale approach to the calculations of actual problems of gas and plasma dynamics has been developed and tested.
2. Numerical methods for solving both independent and related problems that determine the behavior of the system at various scale levels.
3. Parallel algorithms and software packages for modeling multiscale problems.
4. A database on the properties of substances that includes: macroparameters of the gas medium (pure gases and mixture) and metals, parameters for determining the boundary conditions.
5. Model calculations for some actual nanotechnology problems.

# Metallic Nanoparticles Spraying

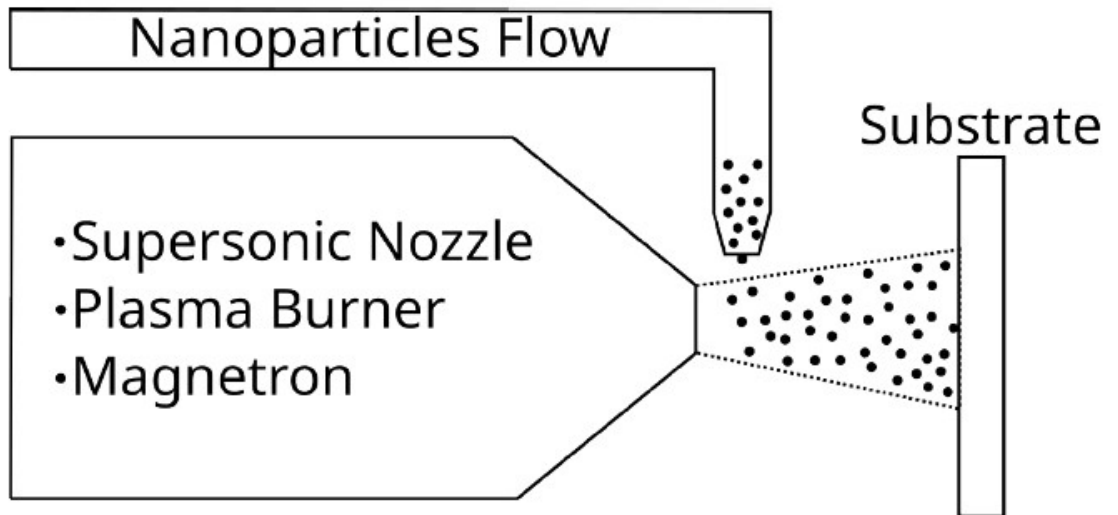
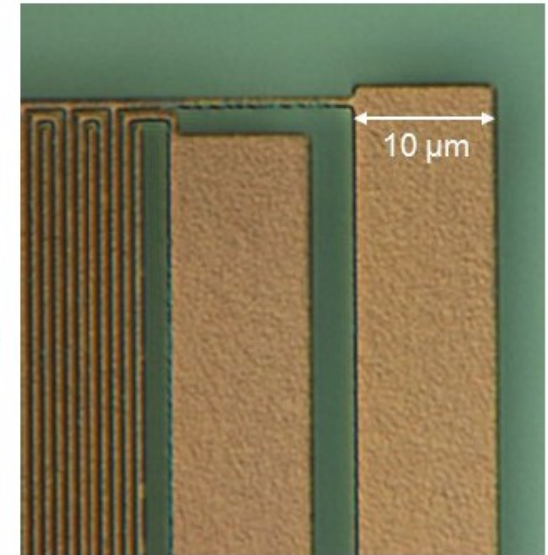
## **Application:**

- protective coatings
- microelectronics
- medical equipment
- bio-sensors
- etc.

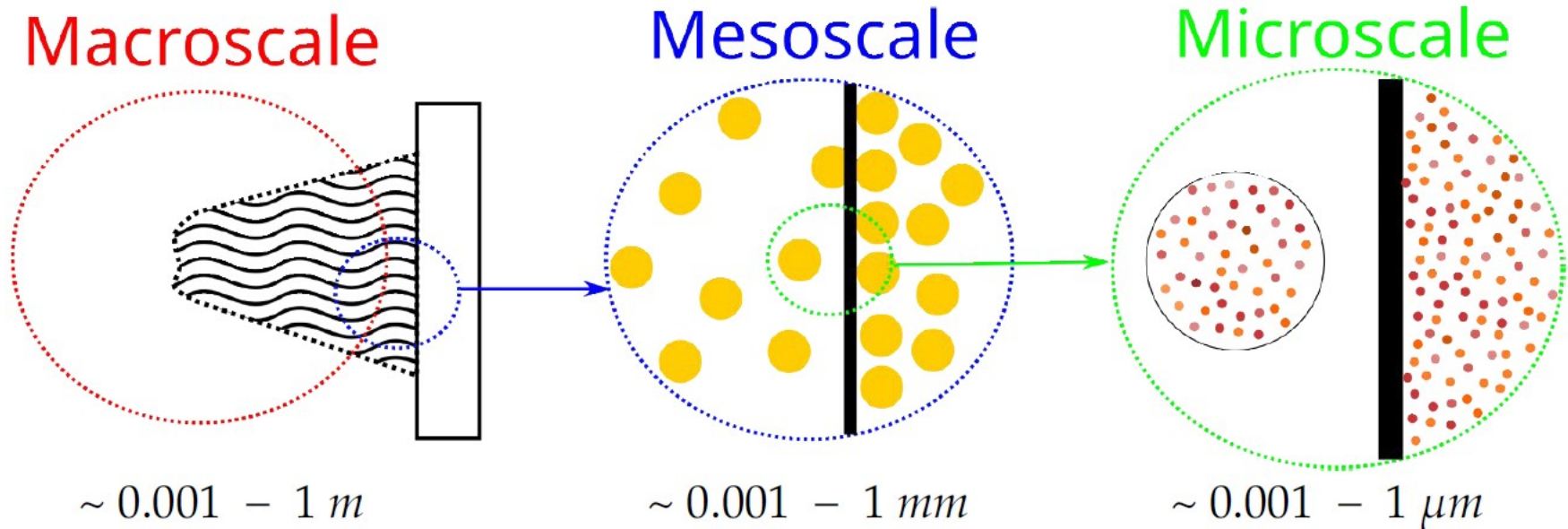
## **Technological methods:**

- supersonic cold gasdynamics spraying
- plasma spraying
- magnetron spraying
- etc.

Birkholz, M.; Ehwald, K.-E.; Wolansky, D.; Costina, I.; Baristiran-Kaynak, C.; Fröhlich, M.; Beyer, H.; Kapp, A.; Lisdat, F. (15 March 2010). "Corrosion-resistant metal layers from a CMOS process for bioelectronic applications". *Surface and Coatings Technology*. **204** (12–13): 2055–2059.



# Multiscale Analysis



## Modeling approaches:

**Macroscopic: Continuum Mechanics Models**

**Mesoscopic: Particle Methods**

**Microscopic: Molecular Dynamics**

**Macroscopic and Microscopic: CMM + MD**

**Macro-, Meso- and Microscopic: CMM + PM + MD**

# Mathematical Models and Numerical Methods

## Mathematical models:

### Macroscopic:

Navier-Stokes equations

**Quasi Gas Dynamics equations**

Maxwell's electrodynamics

### Mesoscopic:

Large particles

Smoothed particles

Particle in cells

**Particle clouds**

### Microscopic:

**Classic Molecular Dynamics**

Quantum Molecular Dynamics

Hartree-Fock approach

Variational models

## Numerical approaches:

**Splitting by physical processes**

**Transitions between scales**

### Macroscopic:

**Cartesian grids**

Unstructured grids

Hybrid block grids

**Finite Volume Method**

**Explicit or Implicit Time schemes**

Spatial and Nonlinearity Iterations

### Mesoscopic:

**Newton dynamics**

### Microscopic:

**Molecular dynamics equations**

Spectral methods

Grid methods

Density functional theory

Method of atomic orbitals

# Parallel technologies and Software tools

## Parallel technologies:

**Domain decomposition**

**Load balancing**

**Hybrid computations**

## Parallel environments:

**MPI**

**OpenMP**

**CUDA**

**Hybrids**

## Programming languages:

**C/C++**

**Fortran**

## Supercomputers\*:

**K100**

**K10**

**K60CPU – 86 nodes, 82 TFlops**

**K60GPU**

**K120**

\* <http://ckp.kiam.ru>

## Self-made software:

### GIMM\_NANO tools:

**GIMM\_Main\_GUI**

**GIMM\_Mesh\_Gen\_Tool**

**GIMM\_Visualizer**

**GIMM\_Jobs\_Management**

**GIMM\_IO\_Lib**

**GIMM\_APP\_MD\_CPU\_Gas\_Metal**

**GIMM\_APP\_QGD\_CPU**

**GIMM\_APP\_QGD\_MD\_CPU**

**GIMM\_APP\_QGD\_MD\_CPU**

### Web-solutions:

**KIAM\_WMCS**

**KIAM\_MDVIS**

**KIAM\_MoISDAG\_CPU**

**KIAM\_MMD\_WUI**

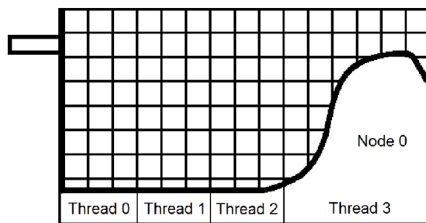
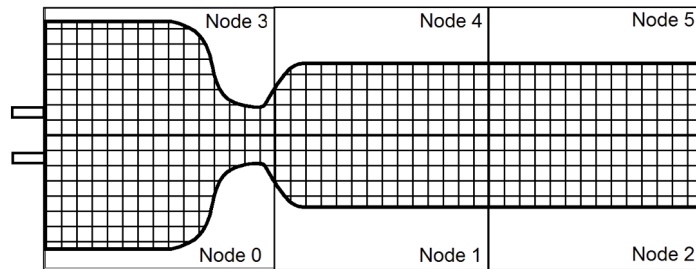
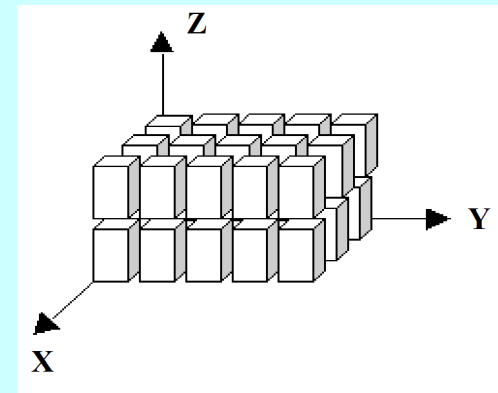
**KIAM\_DIGITAL\_TOOL\_SERVER**

**KIAM\_DIGITAL\_TOOL\_CLIENT**

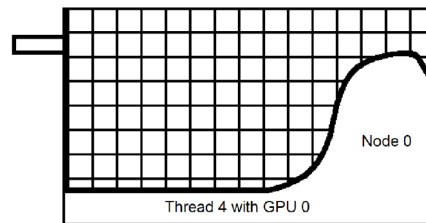
# Parallel realization

- The main method of parallelization - partition into domains of equal power.
- Each domain is divided into "boxes of interaction".
- Topology distribution on domains and boxes - a three-dimensional lattice.
- Topology exchanges - a three-dimensional torus.
- Realization – MPI + OpenMP

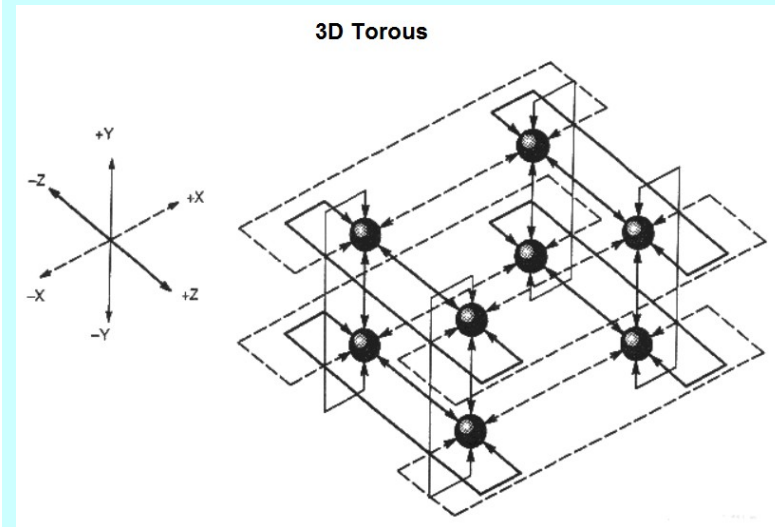
## QGD+NPD/MD domain decompositions



Quasi Gas Dynamic Computations



Molecular Dynamic Computations



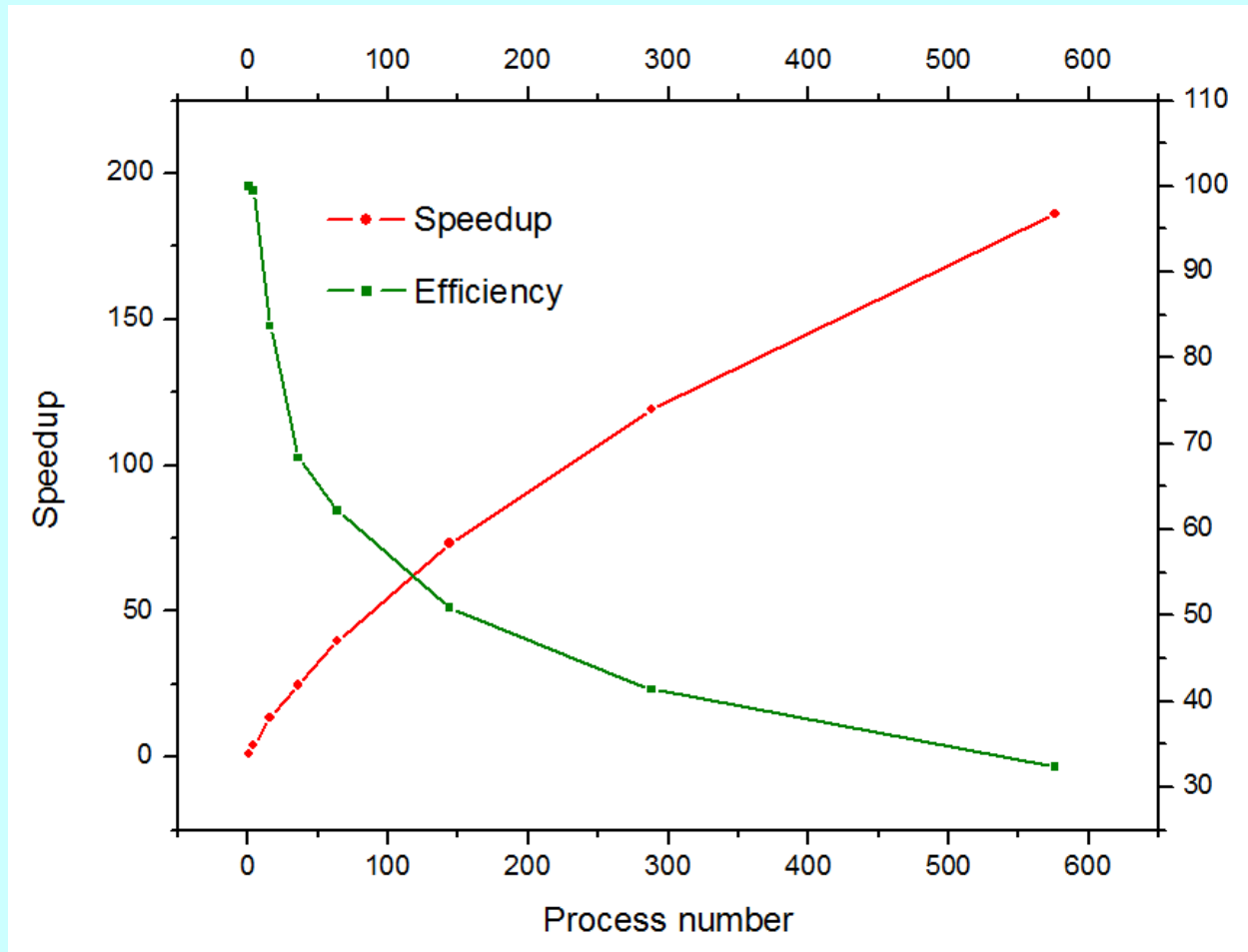
# Test for speedup and efficiency

**MPI+OpenMP solution**

**Macroscopic level: 240000 cells of 3D Grid**

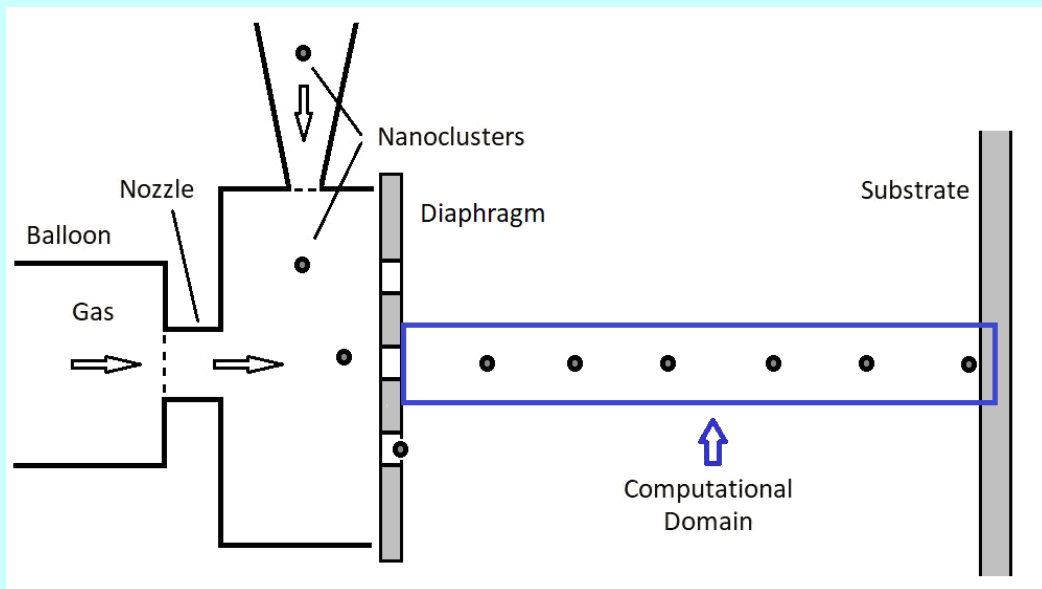
**Microscopic level: 2825358 particles in gas and nanoparticles**

**250000 computation steps**

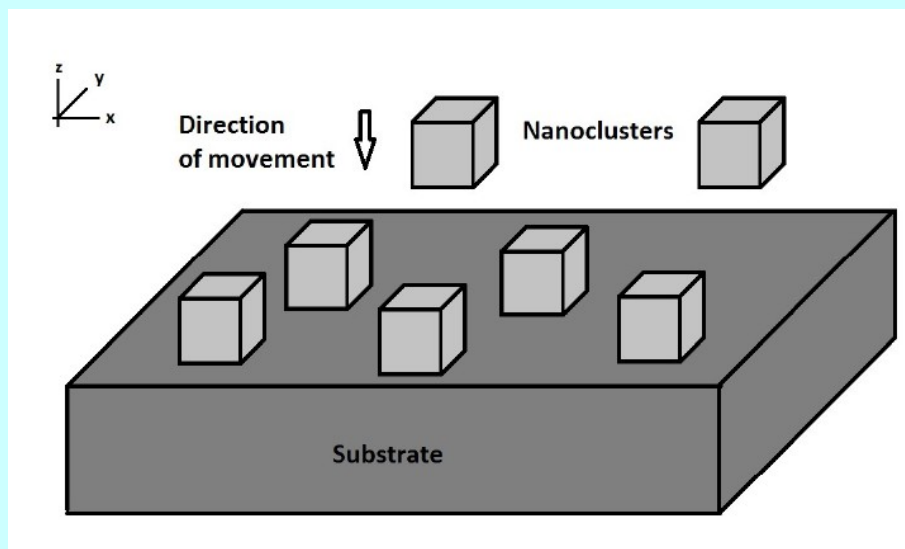




# Supersonic Cold Gas-Dynamic Spraying Nickel Nanoclusters on Substrate

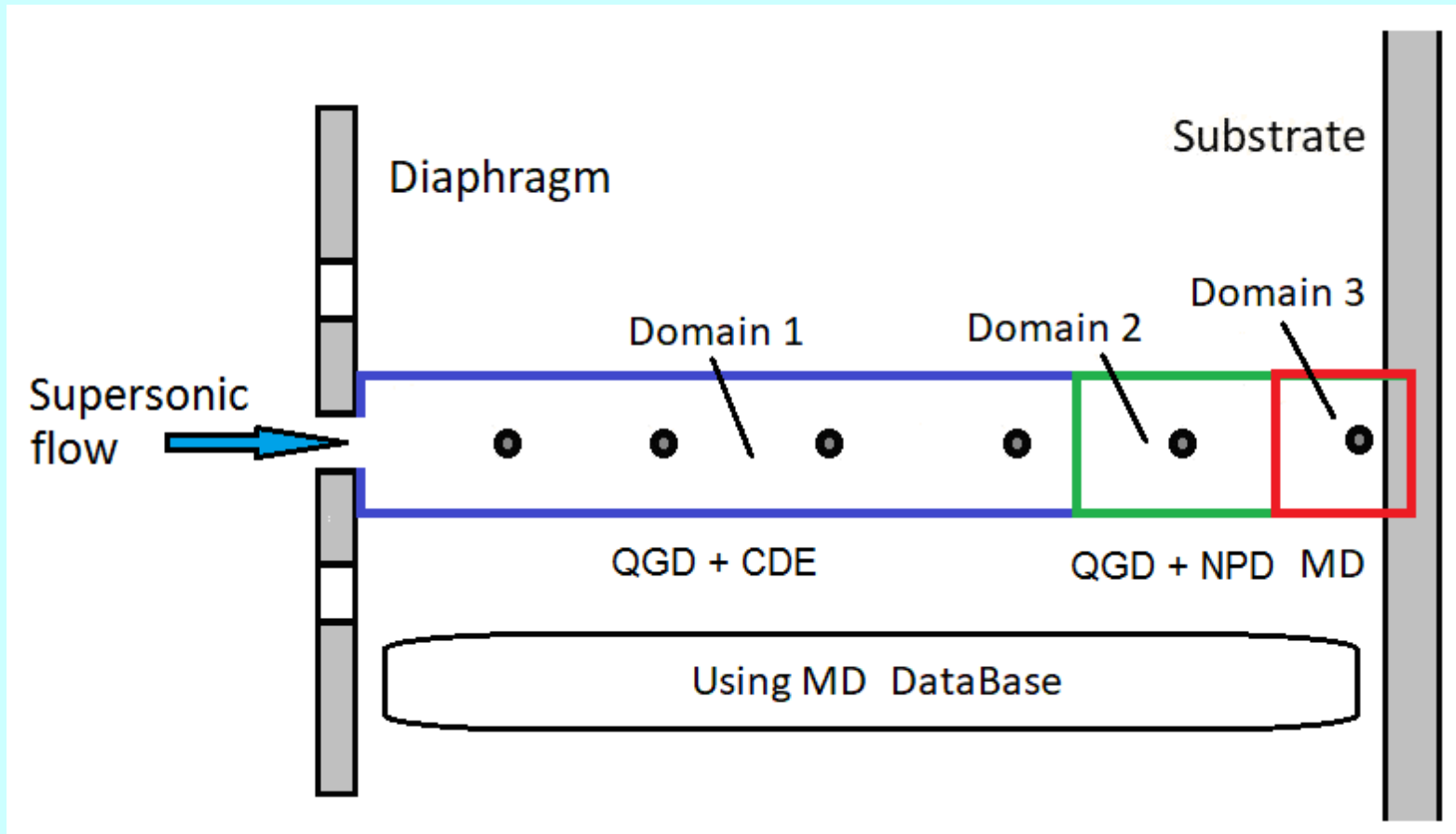


Technology process  
Computational domain



Zoom of substrate zone

# Multiscale approach



Macroscopic model – Quasi-gas-dynamics equations (QGD)  
+ convection-diffusion equations (CDE)

Mesoscopic model – QGD + Newton's particle dynamics (NPD)

Microscopic model – Molecular dynamics (MD)

# Macroscopic basic equations

On the macroscopic level, the quasi-gasdynamic system of equations one component gas is written in the form, that invariant with respect to the coordinate system. In dimensional variables in SI units, this system together with the equations of state and constraints will be written as follows:

$$\frac{\partial \rho}{\partial t} + \operatorname{div} \mathbf{W}^{(\rho)} = 0; \quad \frac{\partial (\rho u_k)}{\partial t} + \operatorname{div} \mathbf{W}^{(\rho u_k)} = 0, \quad k = x, y, z; \quad \frac{\partial E}{\partial t} + \operatorname{div} \mathbf{W}^{(E)} = 0; \quad (1)$$

$$E = \frac{1}{2} \rho |\mathbf{u}|^2 + \rho \varepsilon, \quad \varepsilon = c_V T, \quad H = \frac{E + p}{\rho}, \quad p = Z \rho \Re T, \quad \gamma = \frac{c_p}{c_V}, \quad \operatorname{Pr} = \frac{\mu c_p}{\chi}, \quad \operatorname{Ma} = \frac{|\mathbf{u}|}{a}, \quad \operatorname{Re} = \frac{\rho |\mathbf{u}| \lambda}{\mu};$$

$$\frac{\partial C}{\partial t} + \operatorname{div} \mathbf{W}^{(C)} = 0. \quad (2)$$

It is assumed here that the gas is characterized by mass and number density  $\rho = \rho_g = m_g n$  and  $n = n_g$  ( $m_g$  is the molecule's mass), temperature  $T = T_g$  and macroscopic velocity  $\mathbf{u} = \mathbf{u}_g$ . Other parameters of the gas are as follows:

$p = p_g$  are the partial pressures of gas;  $E = E_g$ ,  $H_g$  and  $\varepsilon_g$  are the densities of total energy, enthalpies and internal energies;  $\mu = \mu(T_g)$ ,  $D = D(T_g)$ ,  $\chi = \chi(T_g)$  are the kinetic coefficients of gas, namely: coefficients of dynamic viscosity, diffusion and thermal conductivity. Variables  $Z = Z(T_g, \rho_g)$ ,  $\gamma = \gamma(T_g, \rho_g)$ ,  $c_V = c_V(T_g)$ ,  $c_p = c_p(T_g)$  and  $\Re = k_B / m_g$  are the compressibility coefficients, adiabatic exponents, specific heat capacities and individual gas constants ( $k_B$  is the Boltzmann constant);  $\operatorname{Pr}$ ,  $\operatorname{Ma}$  and  $\operatorname{Re}$  are the Prandtl, Mach and Reynolds numbers;  $a = a_g$  is the sound speed,  $\lambda = \lambda_g$  is the average free path length;  $C$  is the macroscopic concentration of nanoclusters; vectors  $\mathbf{W}^{(\rho)}$ ,  $\mathbf{W}^{(\rho u_k)}$ ,  $\mathbf{W}^{(E)}$  coincide with the fluxes of density, corresponding components of the momentum density and energy density up to sign, vector  $\mathbf{W}^{(C)}$  is the flux that describes of convection-diffusion process of nanoclusters.

# Meso- and microscopicc equations

On the mesoscopic level we use the Newton's equations

$$M_k \frac{d\mathbf{V}_k}{dt} = \mathbf{F}_k, \quad \mathbf{V}_k = \frac{d\mathbf{R}_k}{dt}, \quad k = 1, \dots, N_p. \quad (3)$$

Here  $M_k, \mathbf{V}_k, \mathbf{R}_k$  are mass, velocity vector, radius vector of nanoclusters,  $\mathbf{F}_k$  is summarized force that acts on the  $k$ -th nanocluster,  $N_p$  is the number of nanoclusters.

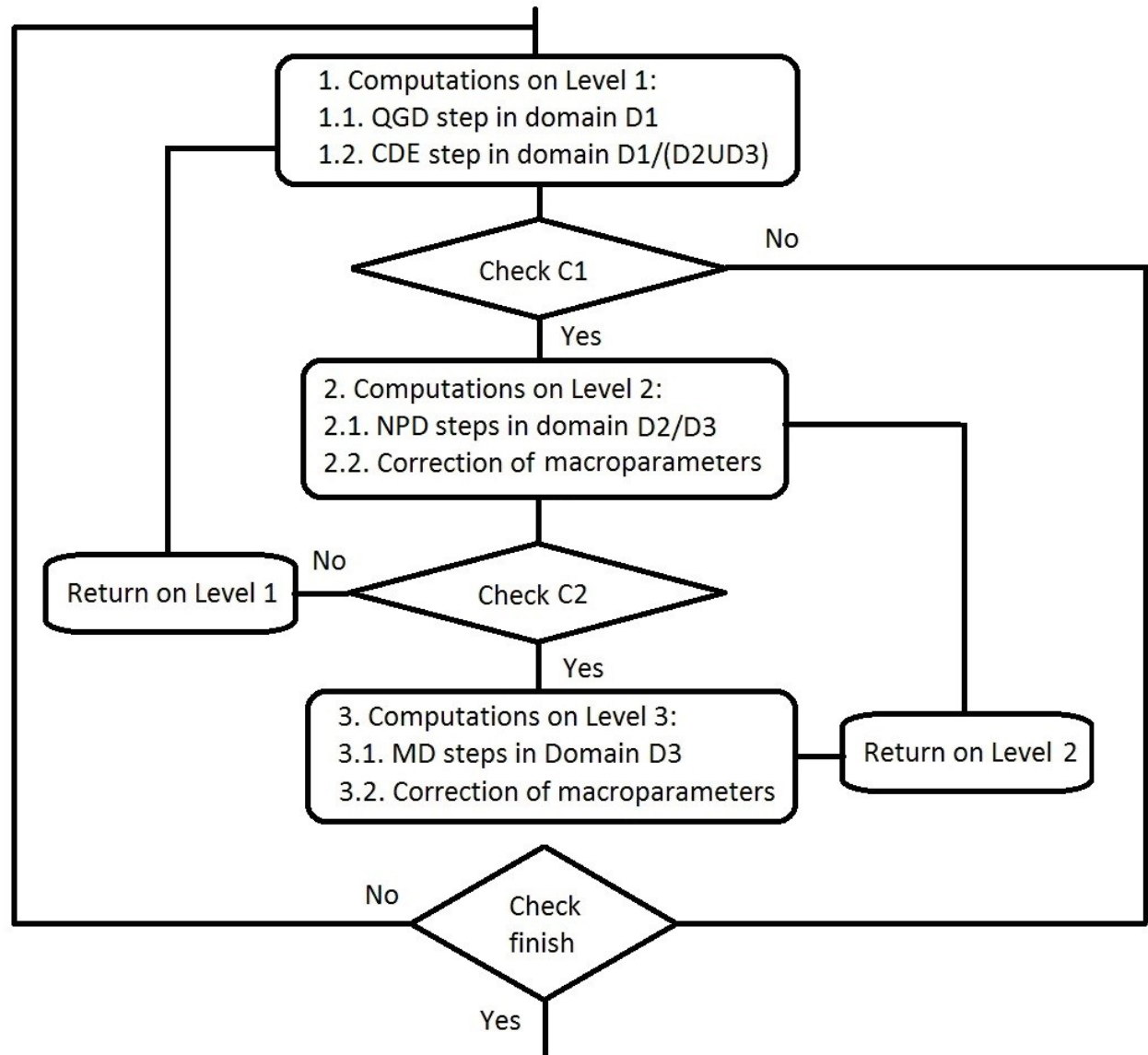
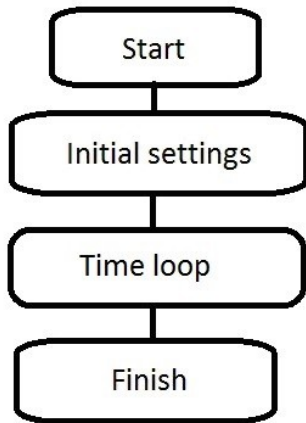
On the microscopic level, the molecular dynamics method was used for modeling. In the case of the study of particles of 2 types (metal and gas), the system of equations looks like this

$$m_l \frac{d\mathbf{v}_{l,i}}{dt} = \mathbf{F}_{l,i}, \quad \frac{d\mathbf{r}_{l,i}}{dt} = \mathbf{v}_{l,i}, \quad i = 1, \dots, N_l, \quad l = g, m, \quad (4)$$

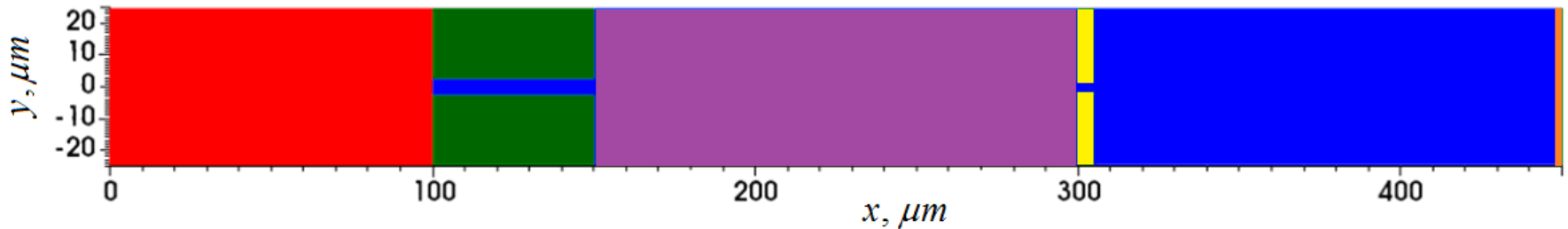
where  $i$  is the particle number,  $l$  is the particle kind ( $g$  means the molecules of gas,  $m$  means the atoms of metal in the nanocluster),  $N_l$  is the total number of particles of kind  $l$ ,  $m_l$  is the mass of particle of kind  $l$ ,  $\mathbf{r}_{l,i}$  and  $\mathbf{v}_{l,i}$  are the position and the velocity vectors of the  $i$ -th particle of kind  $l$ ,  $\mathbf{F}_{l,i}$  is the resultant force acting on the  $i$ -th particle. The forces depend on the interaction potentials. In this work, the Lennard-Jones potential is used for the gas-metal interaction, the potential of Mi "n-6" is used for the gas-gas interaction, and the embedded atom model is used for the metal-metal interaction.

The systems of equations (1)-(4) are closed by the initial and boundary conditions. The initial conditions for both systems are taken in accordance with the equilibrium state of the gaseous medium in the absence of interaction with external factors. Boundary conditions for QGD equations on the free surfaces of the computational domain are the so-called "soft" ones. A constant flow is set at the inlet to the medium with parameters determined by the nozzle configuration and cylinder pressure. Boundary conditions for MD equations are required only for the lateral surfaces of the computational domain, where periodic boundary conditions are used.

# Block diagram of the general calculation algorithm



# Model geometry



**Design geometry includes a balloon (red), a nozzle (green), a nanocluster filling zone (violet), a diaphragm (yellow), a nanocluster transportation zone (blue) and a substrate (orange)**

**The goals of numerical modeling:**

- analysis of spraying process
- optimization of geometry parameters of spraying system
- determination of optimal spraying regime

# Modeling results. Distributions on the axis of symmetry

Gas density,  $\text{kg/m}^3$

Gas pressure, MPa

# Modeling results. Distributions on the axis of symmetry

**Mach number**

**Density of total  
energy, MJ/m<sup>3</sup>**



# Modeling results. 2D distributions

Longitudinal velocity ( $u_x$ ), m/s

Density of total energy, MJ/m<sup>3</sup>

# Modeling results

**Density distribution of the particle system on the axis of symmetry  
at the moment of gluing the nanocluster to the substrate. The image is rotated 90 degrees.**

# Conclusion

- The complex technology of supercomputer modeling the problems of spraying the metal nanoparticles on substrates is presented.
- A spraying model combining macroscopic, mesoscopic and microscopic levels is proposed. The model include: quasi-gasdynamics equations, convection-diffusion equations, Newton's equations.
- Numerical methods that combine the grid and particle methods have been developed.
- Parallel algorithms for implementing numerical schemes based on MPI and OpenMP technologies have been created.
- Model calculations were carried out that demonstrated the operability and adequacy of the developed computing technology.

**Thank you for attention!**